

# CHUCALISSA RENEWED

## 2014

## THE BRISTER ARCHAEOLOGY DISCOVERY LAB

In April of 2008, the C.H. Nash Museum at Chucalissa repurposed the space for the Hands-on Archaeology Lab. Our facility offers a unique opportunity for Museum visitors to experience, explore, and engage with the very same artifacts and processes as archaeologists in interpreting and preserving archaeological sites.

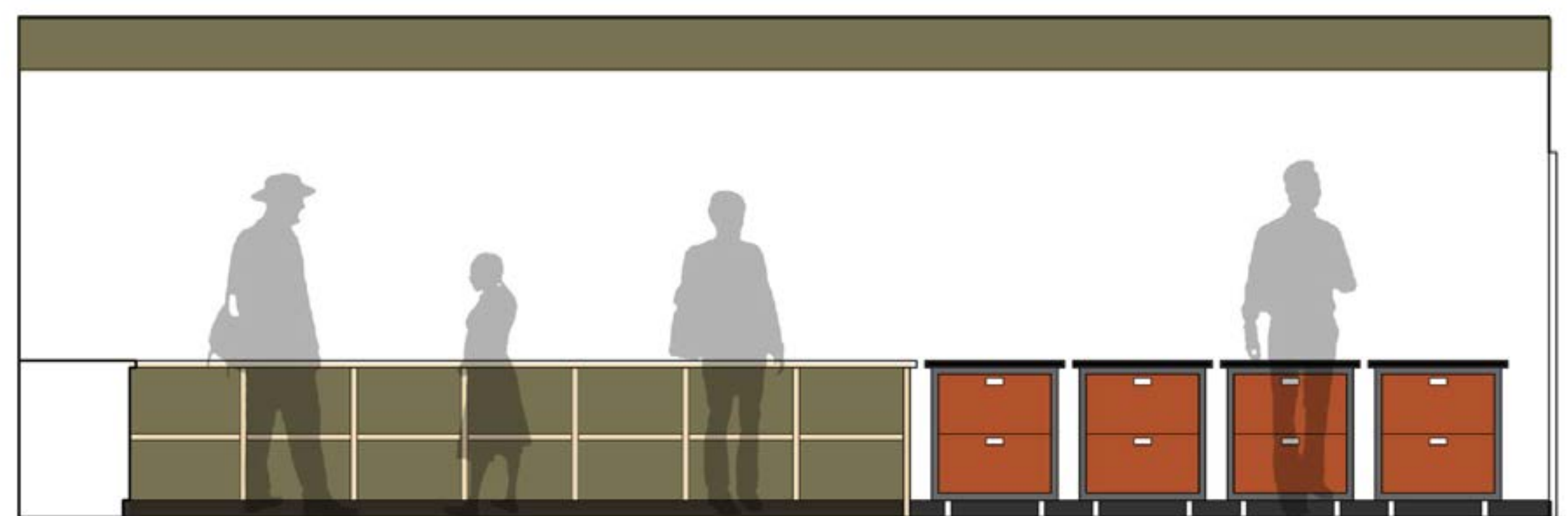
Beginning in 2014, based on focus groups with area educators, visitor feedback, and best Museum Practices envisioned through the University of Memphis Museum Studies Program students, we invite you to participate in the next phase of the Hands-on Archaeology Lab development...

### THE NEW FACILITY:

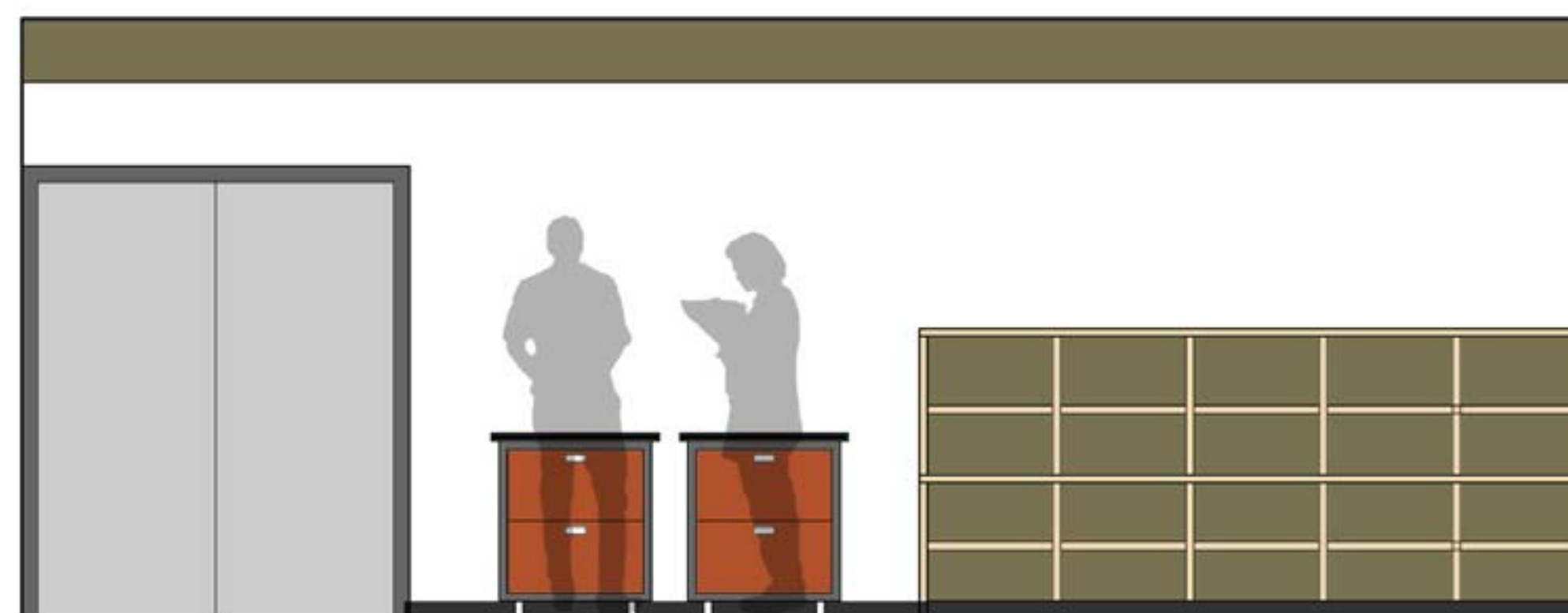
- Incorporates 60 years of excavation data from the Chucalissa site.
- Draws on the museum's extensive collections, to teach the science of archaeology from excavation through interpretation.
- Fully aligns with Common Core curriculum standards.
- Enables a hands-on tactile learning experience supplemented with digital technology.
- A truly unique educational opportunity in the Mid-South!

**1.1 Mobile Educational Activity Units** - Storage and junior touch tables.

**1.2 Artifact Analysis Methods** - Activity Station for hands-on exploration, discovery and demonstration for the analysis of a full range of excavated archaeological materials.

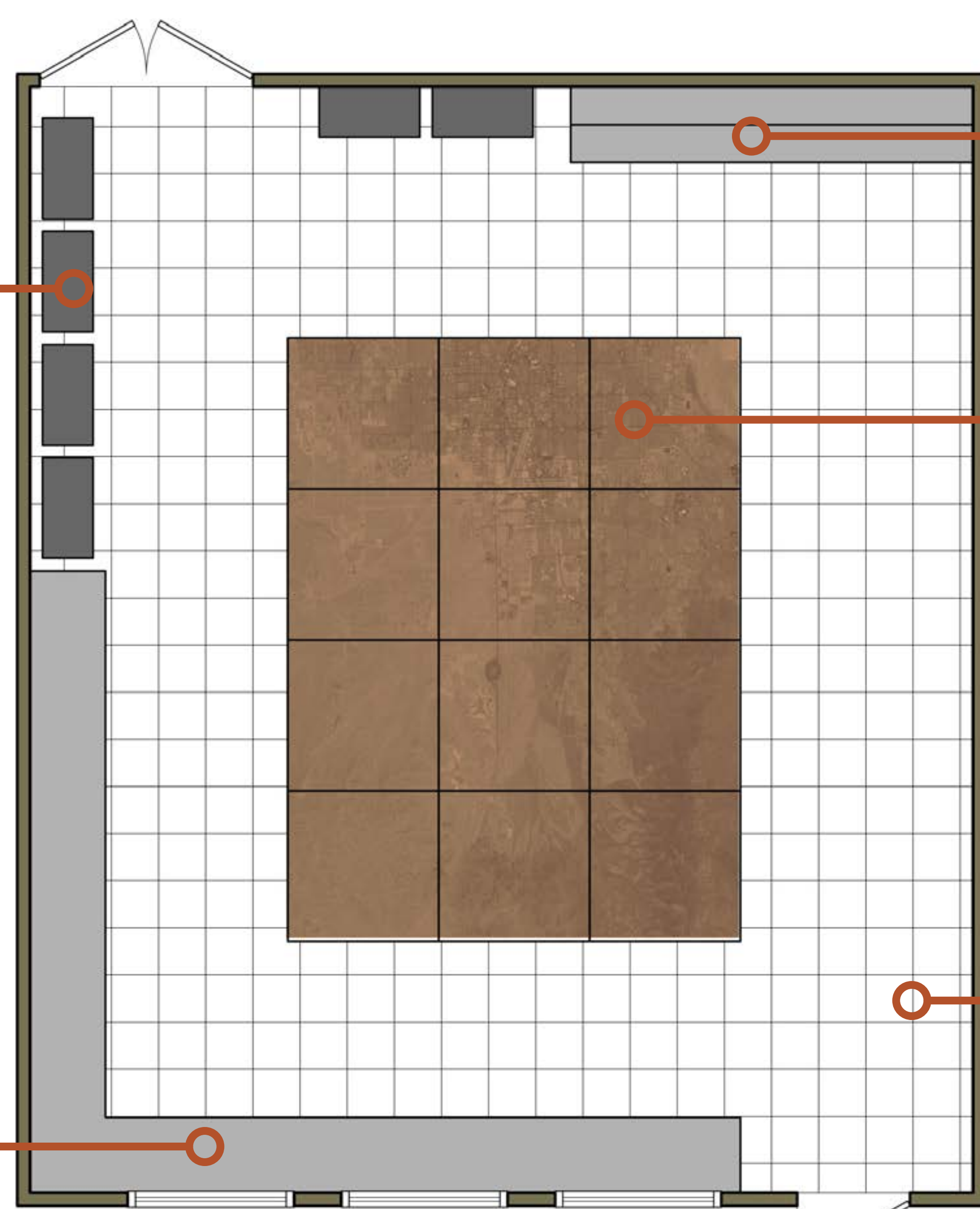


ELEVATION 1.0



ELEVATION 3.0

**3.1 Artifact Excavation Methods** - Activity Station for the examination and participation in excavation methods of archaeological cultural materials. Storage space for educational artifact collections.



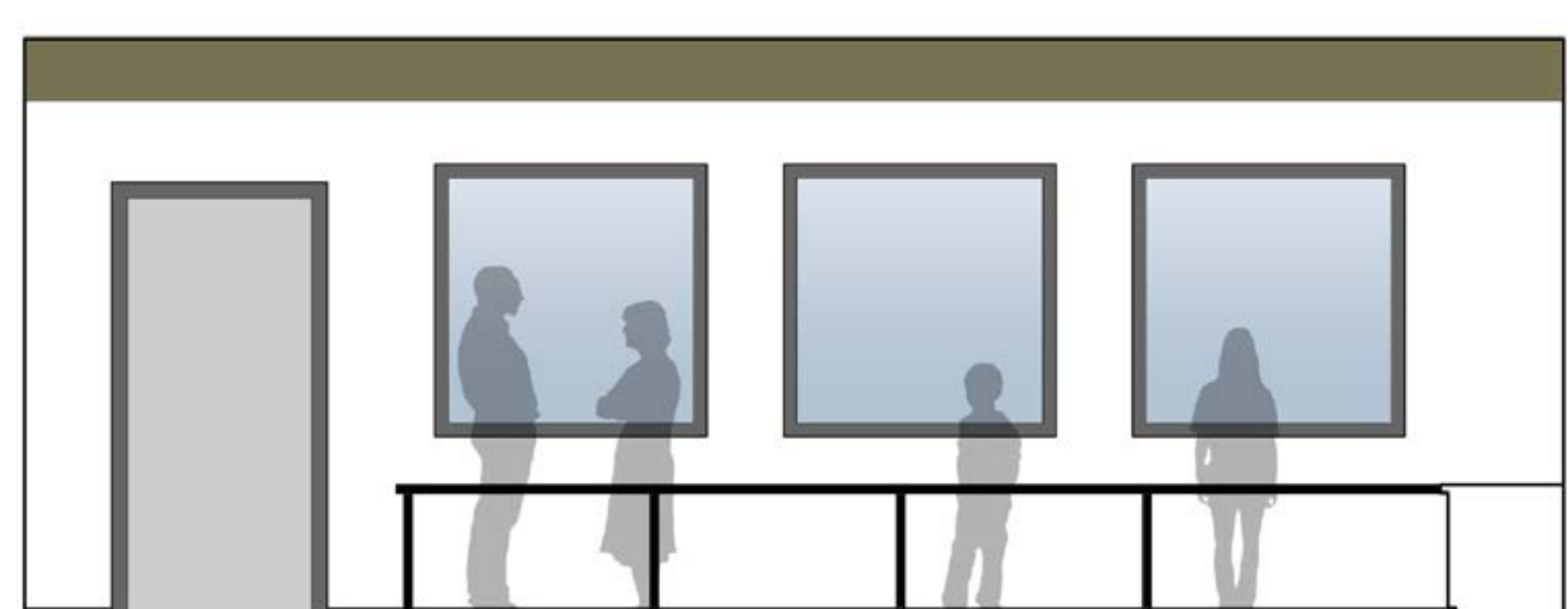
FLOOR PLAN 0.0

**0.1 Grid for Excavation Activity Grid** - One x one meter units for group educational hands-on projects for mapping and excavation methods for both historic and prehistoric archaeological features and artifacts.



ELEVATION 4.0

**2.1 Virtual and Digital Archaeology** - Computer work stations and related equipment to learn and explore about the latest digital methods, materials and records in archaeological research. Link to digital records of materials curated at the Chucalissa site.



ELEVATION 2.0

**4.1 Replication of Chucalissa Excavation Trench** - Schematic drawing of trench, supplemented with mounted photographic and educational panels that detail the 500-year construction of the Chucalissa earthwork.